

88.007  
UC Santa Cruz  
Seson Gallery @  
Porter College  
West Campus Entrance  
Santa Cruz, CA 95064

MARY PORTER  
**SESON**  
ART GALLERY

Gallery Hours  
Tuesday – Saturday  
12 – 5 PM  
831.459.3606  
<http://arts.ucsc.edu/seson>

The gallery is wheelchair  
accessible and admission is free.  
Parking is free on weekends.  
Group tours are available  
by appointment at  
831.459.3606.



# FUSE/fureru

October 7 – November 22, 2008

**SESON RECEPTION:** Tuesday, October 7, 4:30–6:00 pm  
**and PANEL DISCUSSION by visiting artists:** 6:00 pm, location on website

**MAH\* RECEPTION:** Wednesday, October 8, 12:00–1:00 pm

**PRINTMEDIA SEMINAR:** Thursday, October 9 at Baskin Print Studio

**FUSE/fureru** is a two-year exhibition exchange and collaborative project between Kyoto University of Art and Design (KUAD), Tokyo Zokei University (TZU) and the University of California Santa Cruz (UCSC). In the spring of 2007, KUAD and TZU hosted exhibitions of **FUSE/fureru** Part I including works from all 3 universities. Part II will feature 19 faculty members from Japan at UCSC. A special selection of work highlighting 6 visiting artists from Japan in collaboration with art faculty from UCSC will be presented at the \*Museum of Art & History in downtown Santa Cruz.

Non Profit Organization  
U.S. Postage  
PAID  
Santa Cruz, CA  
Permit No.32



## TZU

- 1 有吉徹  
Tetsu ARIYOSHI
- 2 粟野ユミト  
Yumito AWANO\*
- 3 原 健  
Takeshi HARA
- 4 生嶋順理  
Junri IKUSHIMA\*
- 5 木下恵介  
Keisuke KINOSHITA
- 6 近藤昌美  
Masami KONDO
- 7 母袋俊也  
Toshiya MOTAI
- 8 O JUN
- 9 冲啓介  
Keisuke OKI\*
- 10 高橋淑人  
Yoshito TAKAHASHI



12



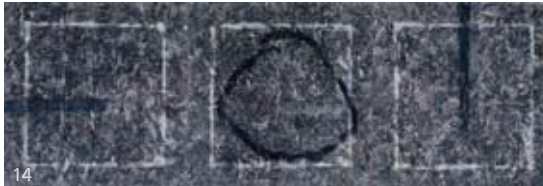
3



11



13



14



4

## FUSE/fureru

国際交流展 2008

Tokyo - Kyoto - Santa Cruz



19



1

## KUAD

- 11 藤本由紀夫  
Yukio FUJIMOTO
- 12 神谷徹  
Toru KAMIYA
- 13 川村悦子  
Etsuko KAWAMURA
- 14 木村克朗  
Katsuro KIMURA
- 15 松井利夫  
Toshio MATSUI\*
- 16 森本玄  
Gen MORIMOTO\*
- 17 奥田輝芳  
Kiyoshi OKUDA
- 18 清水博文  
Hirofumi SHIMIZU\*
- 19 鈴鹿芳康  
Yasu SUZUKA



2



5



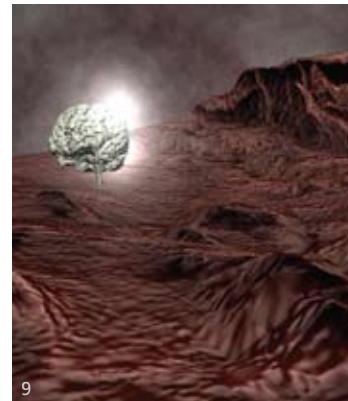
10



16



7



9



18

Support for this exhibition and project was contributed by the UCSC Arts Research Institute (ARI); the Charles Griffin Farr Fund; Awagami Ink Jet Paper; Kyoto University of Art and Design (KUAD); Tokyo Zokei University (TZU); and the University of California Santa Cruz Art Department.

\*visiting artist faculty